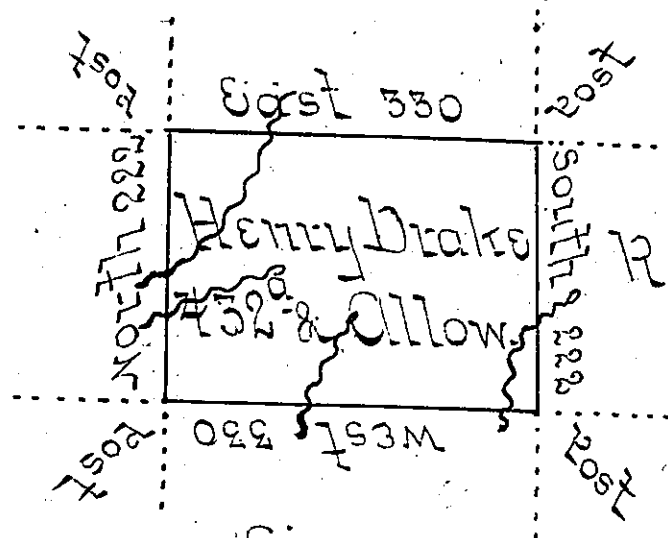


Patrick Cross

John Tracy



Robert Erwin Senf

Simon Boardman

The Above described Tract of Land situate on the Waters of French Creek in Coniattee Township (formerly Waterford Township) in Erie County Survey'd on the Seventeenth day of November 1801 for Henry Drake by virtue of his Actual Residence and improvement. And Resurvey'd on the Twenty eight day of October 1806 by virtue of his Warrant dated August fourteenth 1805 Containing Four hundred and thirty two Acres and Allow - of Six per Cent for roads &c.

Thomas Smith U.S.

To Samuel Cochran Esq }  
 Surveyor General }

IN TESTIMONY that the above is a copy of the original remaining on file in the Department of Internal Affairs of Pennsylvania, made conformably to an Act of Assembly approved the 16th day of February, 1833, I have hereunto set my Hand and caused the Seal of said Department to be affixed at Harrisburg, this first day of July 1902.

*James W. Pitt*  
 Secretary of Internal Affairs.